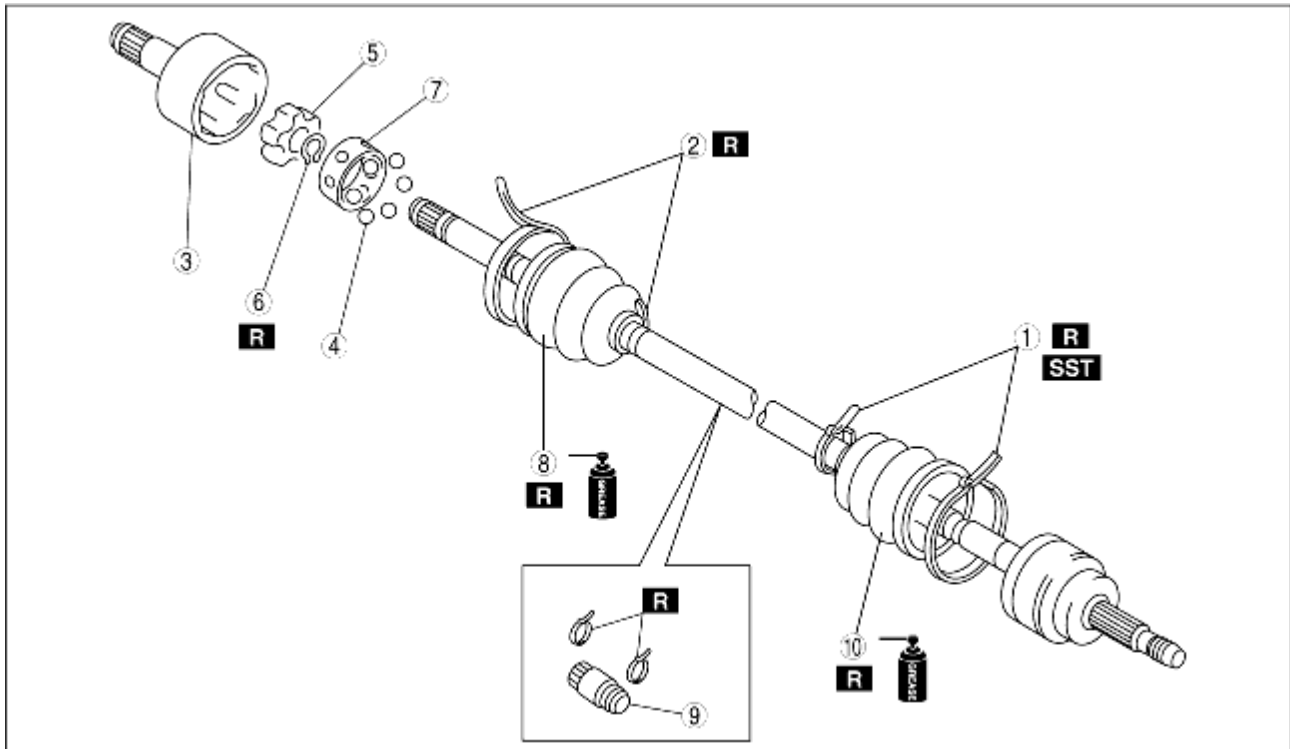


DRIVE SHAFT (DOUBLE OFFSET JOINT) DISASSEMBLY/ASSEMBLY

B3E031325501W01

1. Disassemble in the order indicated in the table.
2. Assemble in the reverse order of disassembly.



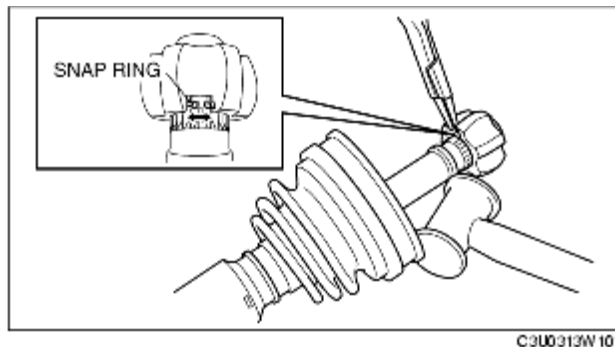
B3E0313W022

1	Boot band (wheel side, transaxle side: smaller diameter) (See DRIVE SHAFT (TRIPOD JOINT) DISASSEMBLY/ASSEMBLY.)
2	Boot band (transaxle side larger diameter) (See DRIVE SHAFT (TRIPOD JOINT) DISASSEMBLY/ASSEMBLY.)
3	Outer ring (See Outer Ring, Clip Assembly Note.)
4	Balls (See Cage, Inner Ring, Balls, Snap Ring Assembly Note.)
5	Inner ring (See Inner Ring Disassembly Note.) (See Cage, Inner Ring, Balls, Snap Ring Assembly Note.)
6	Snap ring (See Cage, Inner Ring, Balls, Snap Ring Assembly Note.)
7	Cage
8	Boot (See Boot Assembly Note.)
9	Dynamic damper

	(See Dynamic Damper Assembly Note.)
10	Shaft and ball joint component

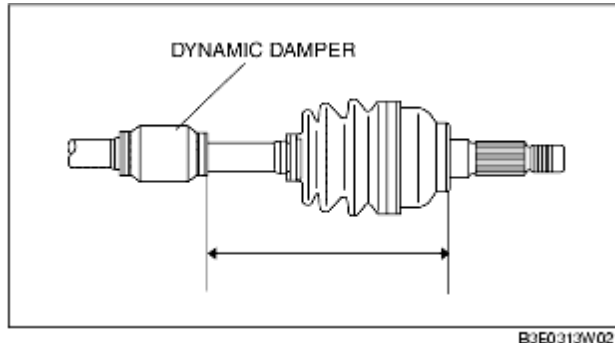
Inner Ring Disassembly Note

1. Move the dynamic damper to the wheel side of the drive shaft.
2. Move the boot and cage to the wheel side of the drive shaft.
3. Tap the inner ring using a plastic hammer while spreading the snap ring, and disassemble the inner ring from the drive shaft.



Dynamic Damper Assembly Note

1. Install the dynamic damper as shown in the figure.



Standard length
195-205 mm {7.68-8.07 in}

2. Install a new boot band onto the dynamic damper.

Boot Assembly Note

Note

- The wheel-side and transaxle-side boots are different.

1. Fill the boot (wheel side) with the specified grease.

Caution

- Do not touch grease with your hand. Apply it from the tube to prevent foreign matter from entering the

boot.

Grease amount

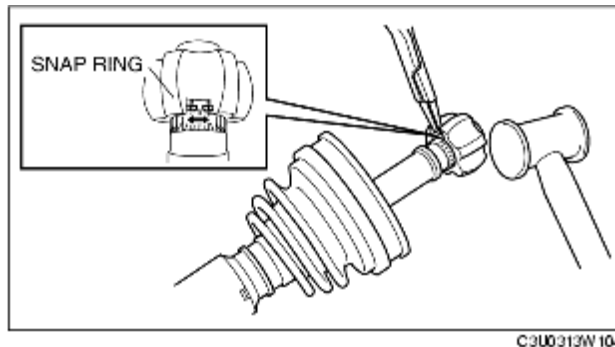
ZJ, Z6 (MTX): 93-103 g {3.29-3.63 oz}

LF (MTX): 110-120 g {3.89-4.23 oz}

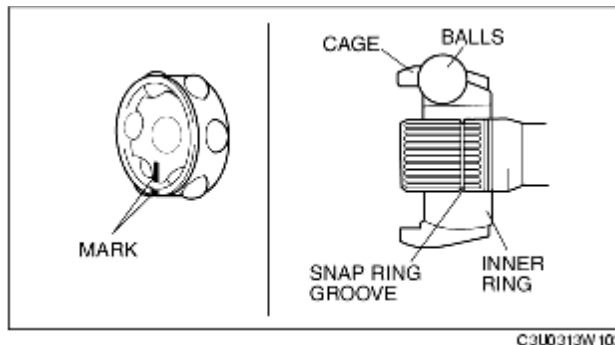
2. Install the boot with the splines of the shaft still wrapped in tape from disassembly.
3. Remove the tape.

Cage, Inner Ring, Balls, Snap Ring Assembly Note

1. Tap the inner ring using a plastic hammer while spreading the snap ring, and assemble the inner ring to the drive shaft.



2. Align the marks and install the balls and cage to the inner ring as shown in the figure.



Outer Ring, Clip Assembly Note

1. Fill the outer ring and boot (transaxle side) with the specified grease.

Caution

- Do not touch grease with your hand. Apply it from the tube to prevent foreign matter from entering the boot.

Grease amount

ZJ, Z6 (MTX/RH): 101-111 g {3.57-3.91 oz}

LF (MTX/RH): 140-145 g {4.95-5.11 oz}

2. Install the outer ring on to the shaft.
3. Install the boot.

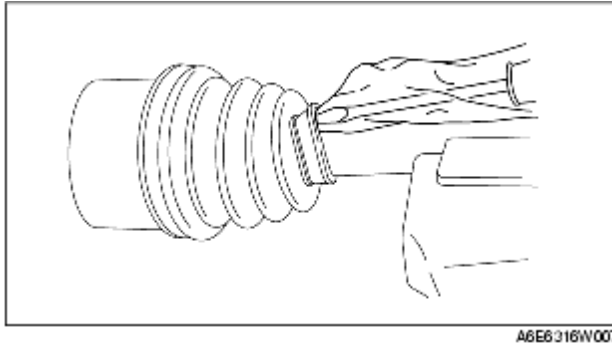
4. Set the drive shaft to the standard length.

Standard

ZJ, Z6 (MTX/RH): 526.3-536.3 mm {20.73-21.11 in}

LF (MTX/RH): 562.7-572.7 mm {22.16-22.54 in}

5. Release any trapped air from the boots by carefully lifting up the small end of each boot with a cloth wrapped screwdriver.



Caution

- Be careful not to allow the grease to leak.
- Do not damage the boot.

6. Verify that the drive shaft length is within the specification.